



Hoggs Norton, Hoggs Norton, Orton Lane,

**Loveitts**  
PART OF | SHELDON BOSLEY KNIGHT



# Property Description

\*\*\*DON'T MISS OUT ON FUTURE RELEASES -  
CALL US TODAY TO FIND OUT MORE\*\*\*

This impressively sized 3 bedroom detached home (1430 sq ft), sits within an exclusive development of just 4 new homes in the rural village of Norton Juxta, Twycross.

The accommodation on the ground floor comprises of an open plan kitchen/dining and family room which is bathed in natural light from above, with a large skylight window, while bi-folding doors open out to the beautiful rear garden for seamless indoor/outdoor living. Also, a separate utility room which takes care of those family practicalities. This home also offers a separate family lounge and additionally a snug/study, perfect for working from home or to accommodate family members coming to stay.

On the first floor are 3 generously sized bedrooms, including the master bedroom with picturesque views over peaceful countryside and a luxurious ensuite. Also, to the first floor is, a family bathroom with bath and separate shower cubicle. This new home also benefits from a single detached garage with driveway.

Designed to a high specification this home includes quartz worktops to the kitchen, underfloor heating to ground floor, integrated appliances, including a wine cooler and flooring throughout. This home also gains from being energy efficient benefiting from an air source heat pump, potentially having exceptional savings on your energy bills.

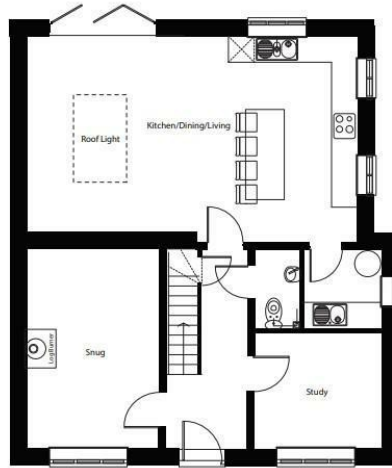




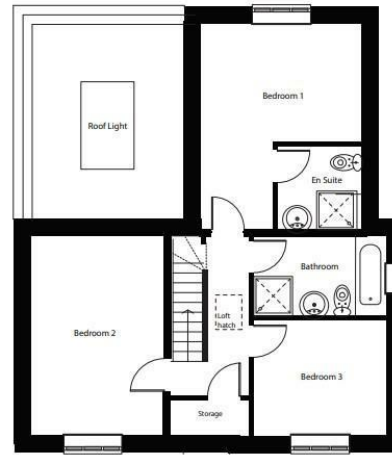




## Plot 3 - Hoggs Norton



Ground Floor



First Floor



## Key Features

- \*\*\*DON'T MISS OUT ON FUTURE RELEASES\*\*\*
- Brand New Home - with rear aspect countryside views in a Beautiful Village Location
- High Specification throughout
- Air source heat pump and underfloor heating to ground floor
- Open plan Kitchen/Dining & family room with bi-fold doors to rear garden
- Master Bedroom with ensuite
- Single garage and driveway
- Lounge and separate study/snug
- No upward chain
- M42/A5 Road Network Links

**£539,500**